



ASM 1000

Technical Data & Photo Catalogue

Technical Specification

Outside diameter	1535	mm
Overall length with cutting wheel	3267	mm
Max Torque left/right	150	kNm
Breakout Torque	180	kNm
Revolution	8.5	rpm
Number of drive motors	1	No.
Number of steering cylinders	3	No.
Steering stroke	65	mm
Diameter of steering cylinder Piston/Rod	140/90	mm
Steering capacity per cylinder extend /retract	70/45	kN
Maximum pressure of steering cylinder	400	bar
Steering angle Up /down	5°	
Steering angle Diagonal	5°	
Steering angle Left /right	4°	
Unti clogging Jet wah	Yes	3 out let in chamber
Operating Pressure	3	Bar

Hydraulic and bypass System

Power of Main Pump	110	Kw
Power of Push pump	55	Kw
Power of Steering & Cooling pump	15	Kw
Hydraulic pressure for drive unit	280	bar
Diameter feed /slurry lines	125	mm
Diameter bypass	125	mm
Type & Number of Slurry actuators	Hydraulic	2 No
Maximum pressure bypass cylinder	200	bar

Laser target

Dimensions active surface of laser target	146x 88	mm
---	---------	----

Tunneling machine dimensions

Diameter	1505	mm
Length without cutting wheel	3056	mm
Length with cutting wheel	3420	mm
Thread	4xM30	
Weight	~ 6530	kg

Control Cabin Specification

Diameter	20'	Standard Container
Control system	Siemenc S7	1500
Total Power	370	Kw
Power for Invertors	3 x 55	Kw
Attachments	Air Compressor	Air Conditioner
Launch shaft assets	Shaft box	Switch boxes
Cabin Weight	~ 12000	kg

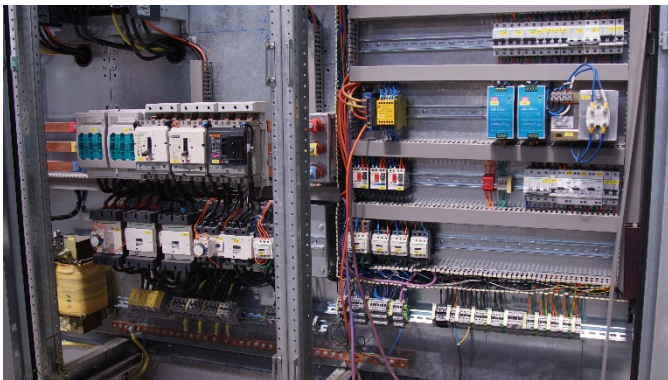
Jacking frame Specification

Thrust capacity	5200	KN
Working pressure	400	Bar
No of Thrust Cyl	4	No
Diameter of Thrust Cyl	220/160	mm
Leveling System	Threated bolt	4 No
Diameter	4180 x 2880 x 2190	mm
Total Weight	1520	kg

Manufacturing and Assembly Process



ASM 1000 Technical Data & Photo Catalogue



ASM 1000 Technical Data & Photo Catalogue

